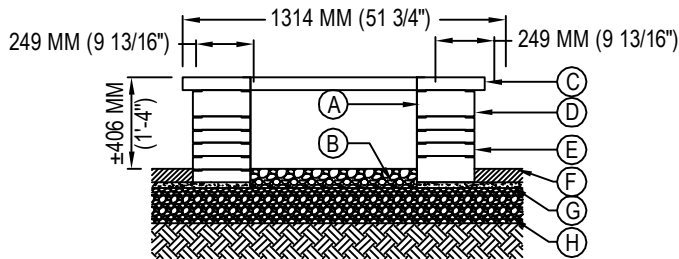
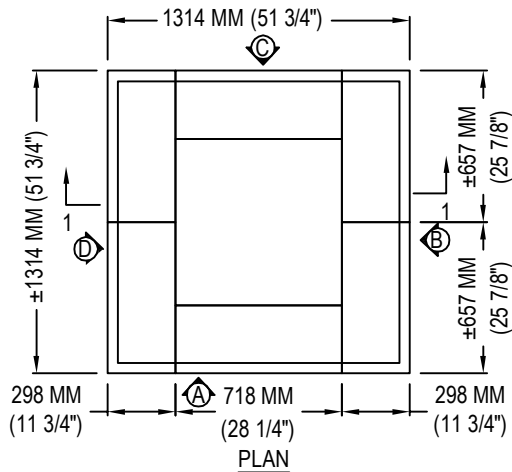




TECHO-BLOC  
5255 ALBERT-MILLICHAMP  
ST-HUBERT, QC J3Y 8Z8  
TOLL FREE: 1-877-832-4625  
www.techo-bloc.com



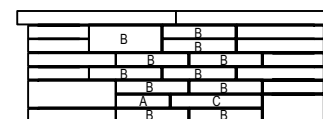
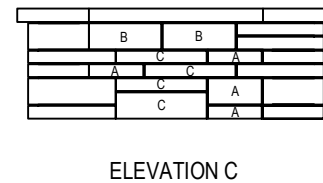
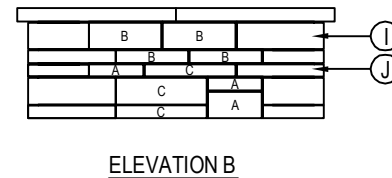
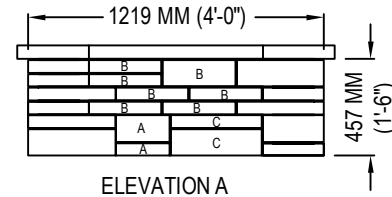
SECTION 1-1

#### LEGEND:

- (A) STEEL BOX INSERT
- (B) CLEAN STONE 3/4" (20 MM), 4" (100 MM) THICK
- (C) PIEDIMONTE CAP (CUT)
- (D) PRESCOTT 4.5" BLOCK
- (E) PRESCOTT 2.25" BLOCK
- (F) TECHO-BLOC PAVERS OR SLABS
- (G) SETTING BED 1" (25 MM)
- (H) COMPACTED GRANULAR BASE 0-3/4" (0-20 MM)
- (I) PRESCOTT 4.5" CORNER BLOCK
- (J) PRESCOTT 2.25" CORNER BLOCK

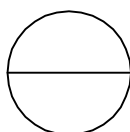
#### NOTES:

1. SECURE THE BLOCKS USING A HEAT RESISTANT CONCRETE ADHESIVE. THE INSTALLER MUST ENSURE THAT THE INSTALLATION AND USE OF THE FIREPIT COMPLY WITH LOCAL REGULATIONS AND CODE REQUIREMENTS.
2. INSTALLATION TO BE COMPLETED IN ACCORDANCE WITH MANUFACTURER'S SPECIFICATIONS.
3. DO NOT SCALE DRAWING.
4. THIS DRAWING IS INTENDED FOR USE BY ARCHITECTS, ENGINEERS, CONTRACTORS, CONSULTANTS AND DESIGN PROFESSIONALS FOR PLANNING PURPOSES ONLY. THIS DRAWING MAY NOT BE USED FOR CONSTRUCTION.
5. ALL INFORMATION CONTAINED HEREIN WAS CURRENT AT THE TIME OF DEVELOPMENT BUT MUST BE REVIEWED AND APPROVED BY THE PRODUCT MANUFACTURER TO BE CONSIDERED ACCURATE.
6. CONTRACTOR'S NOTE: FOR PRODUCT AND COMPANY INFORMATION VISIT [www.CADdetails.com/info](http://www.CADdetails.com/info) AND ENTER REFERENCE NUMBER 5058-057.



#### QUANTITY OF MATERIALS REQUIRED:

- PIEDIMONTE CAP: 6
- PRESCOTT 2.25" BLOCK: 7 A, 18 B, 7C
- PRESCOTT 4.5" BLOCK: 3A, 6B, 3C
- PRESCOTT 2.25" CORNER BLOCK: 16
- PRESCOTT 4.5" CORNER BLOCK: 6



FIREPITS

FIREPITS: PRESCOTT