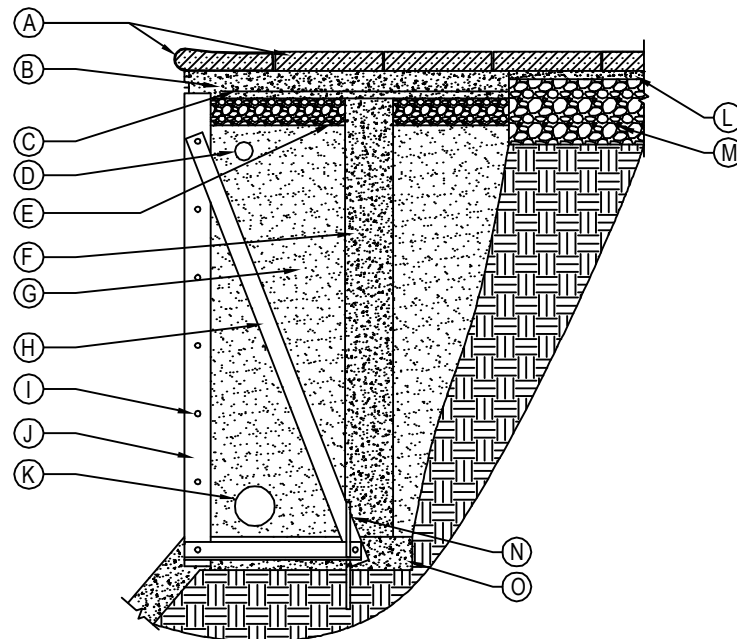




TECHO-BLOC
5255 ALBERT-MILLICHAMP
ST-HUBERT, QC J3Y 8Z8
TOLL FREE: 1-877-832-4625
www.techo-bloc.com



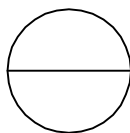
SECTION

LEGEND:

- (A) TECHO-BLOC POOL COPING AND PAVER SECURED TO CONCRETE SLAB WITH ADHESIVE OR MORTAR
- (B) CONCRETE DECK 39" (1 M) WIDE BY 4" (100 MM) THICK MIN.
- (C) WELDED WIRE MESH, 6X6-W1.4/W1.4 (152X152 MW9.1XMW9.1)
- (D) FLEXIBLE PIPE, 1 1/2 (40 MM) DIA.
- (E) CLEAN STONE 3/4" (20 MM), 2" (50 MM) THICK MIN.
- (F) CONCRETE PILLAR, 6" (150 MM) DIA.
- (G) SAND BACKFILL
- (H) STRUT
- (I) POOL PANEL
- (J) POOL LINER
- (K) PERFORATED DRAIN, 4" (100 MM) DIA. WRAPPED WITH A GEOTEXTILE
- (L) BEDDING COURSE, 1" (25 MM)
- (M) COMPACTED GRANULAR BASE 0-3/4" (0-20 MM)
- (N) STEEL ROD 3/8" (10 MM) ANCHORED TO SUBGRADE
- (O) CONCRETE FOOTING, 4" (100 MM) THICK MIN.

NOTES:

1. INSTALLATION TO BE COMPLETED IN ACCORDANCE WITH MANUFACTURER'S SPECIFICATIONS.
2. DO NOT SCALE DRAWING.
3. THIS DRAWING IS INTENDED FOR USE BY ARCHITECTS, ENGINEERS, CONTRACTORS, CONSULTANTS AND DESIGN PROFESSIONALS FOR PLANNING PURPOSES ONLY. THIS DRAWING MAY NOT BE USED FOR CONSTRUCTION.
4. ALL INFORMATION CONTAINED HEREIN WAS CURRENT AT THE TIME OF DEVELOPMENT BUT MUST BE REVIEWED AND APPROVED BY THE PRODUCT MANUFACTURER TO BE CONSIDERED ACCURATE.
5. CONTRACTOR'S NOTE: FOR PRODUCT AND COMPANY INFORMATION VISIT www.CADdetails.com/info AND ENTER REFERENCE NUMBER 5058-042.



POOL COPING

POOL COPING